

ZW Metric



ZWMetric 2024

All rights reserved including the right of reproduction in whole or in part in any form. No part of this publication may be reproduced or transmitted in any form or by any means, electronic or mechanical, including photocopying, recording, or by any information storage and retrieval system, without prior permission from Usługi Informatyczne "SZANSA" Sp. z o.o.

All signs found in the text are trademarks or registered trademarks of their respective owners. Usługi Informatyczne "SZANSA" Sp. z o.o. has made its best effort to deliver complete and reliable information within this manual. The firm shall not be held liable for the usage, or for any potential breach of patent or copyrights included within the manual.

Usługi Informatyczne "SZANSA" Sp. z o.o. may in no way be held responsible for damage that may occur as a result of and/or when using the information found within the manual.

Usługi Informatyczne "SZANSA" Sp. z o.o.

ul. Świerkowa 25

43-305 Bielsko-Biała

NIP 937-267-27-69

www.zwcad.pl

tel. +48 33 307 01 95

Copyright © Usługi Informatyczne "SZANSA" Gabriela Ciszynska-Matuszek.



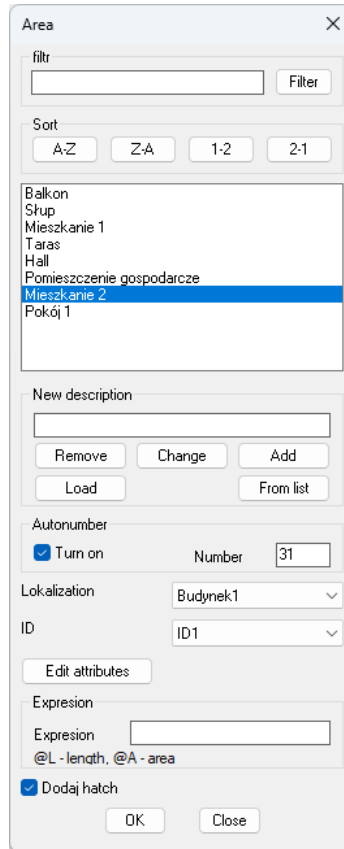
Spis treści

ZWMetric 2024.....	2
Markings.....	4
Area measurement.....	4
Area outline.....	5
Area marking.....	5
Measurements.....	6
Area by point.....	6
Mark area.....	7
Line measurement.....	8
Find/select.....	9
Find.....	9
Select.....	9
Tools.....	10
Sum of length.....	10
Draw a triangle by distance.....	11
MDist.....	11
Draw a triangle by angle.....	11
Report.....	12
Settings.....	13
Activate.....	14
Manual load.....	16

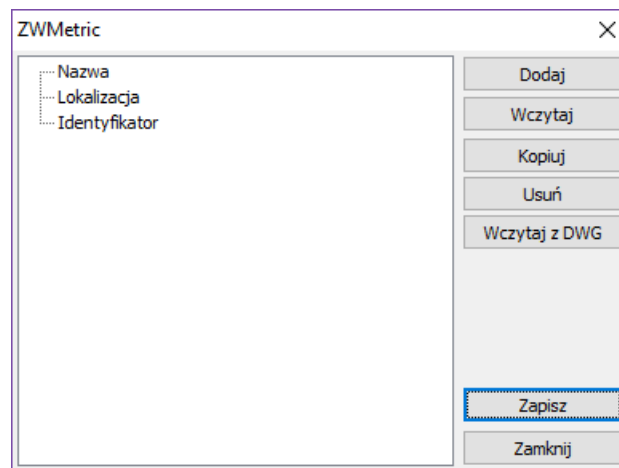
Markings

Area measurement

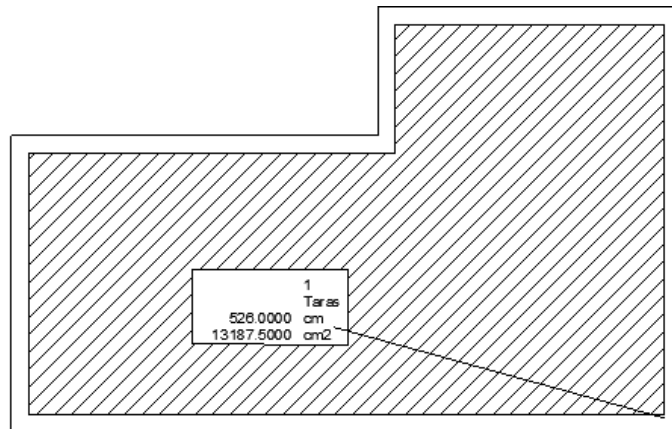
This command lets you mark an area in a drawing. It is possible to add a description as well as additional settings.



After activating the function, enter New description by entering it and clicking on Add. Then please enter the type of Location and the identifier by clicking on Edit attributes. A window will appear in which you should expand the given tab and after click Add enter the name of the Location and the name of the Identifier. After entering, click Save.



Then the program will ask the user to indicate the external out lines of the measured surface. In the next step, it will ask you to indicate the area to be excluded from the calculation. These outlines must be polyline objects. Then the user will be asked to draw a descriptive line, at the end of which a descriptive block will be inserted. The block will contain the description selected in the window, the numerical value of the surface of the selected area, the length of its perimeter and if so specified in the settings, as well as the attributes: location, identifier and name. If the appropriate box is selected in the window, a hatch inside the external surface outline will also be added to the drawing.



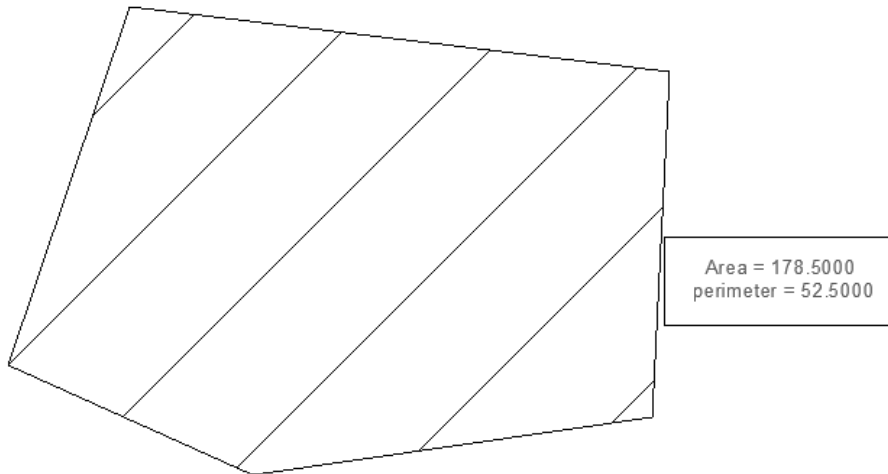
Area outline

The function can be used to add a description of an area to a drawing. You need to start a function, and choose a description you want to add. After that set up points that will create a space you want labelled. The function ends when you close an area or you click right mouse button.



Area marking

The function allows you to input an area value in a description block defined on an area by points. The area should be selected in the same way as in the previous function. Once finished, confirm by Enter and specify next points of the description line.

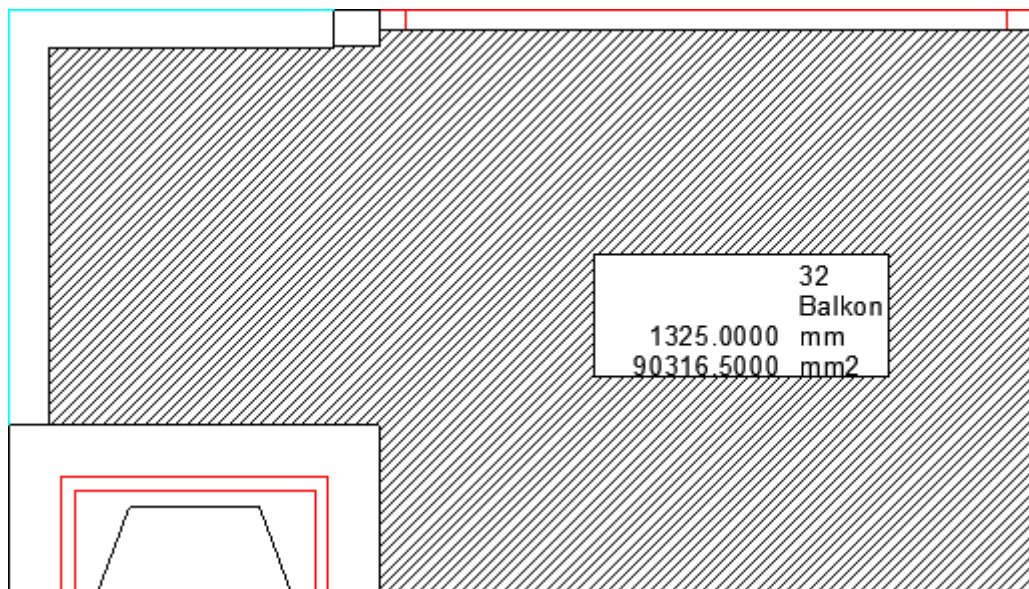


The text settings in the description block and background are available in the settings. With this function, you can quickly measure the perimeter and surface area of the selected area.

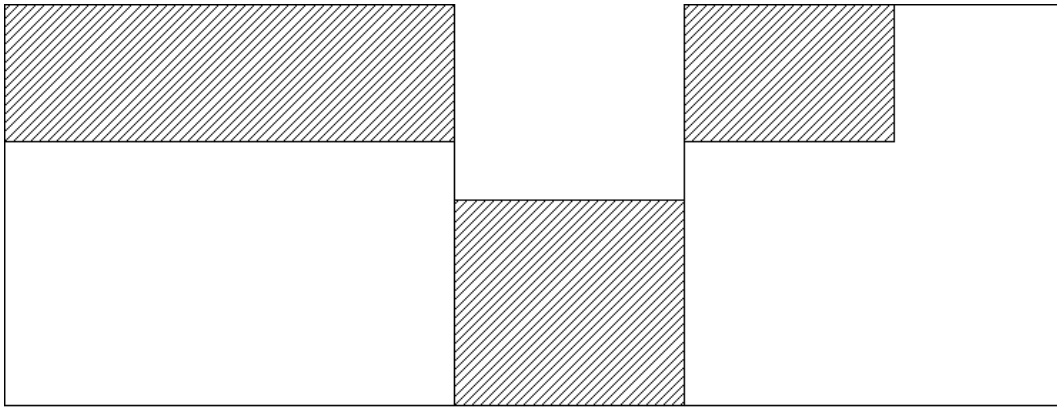
Measurements

Area by point

By using the function Area by Point you can define an area by specifying a point within an object that we would like to describe. Once activated, a window will appear where you will have to define the name of the area, auto numeration and hatching. Afterwards, specify a point within a closed area which is going to be described.



The command lets you specify more than one area. On the example below we can see a few closed areas. When activated, Area by Point will let you specify points within closed areas. Once it's done, confirm by pressing Enter.

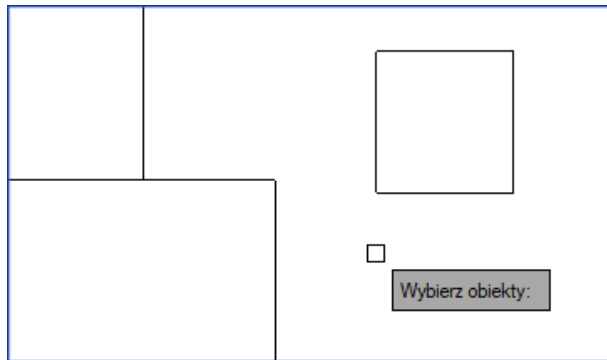


	36
	Hall
1838.0000	cm
47956.0000	cm2

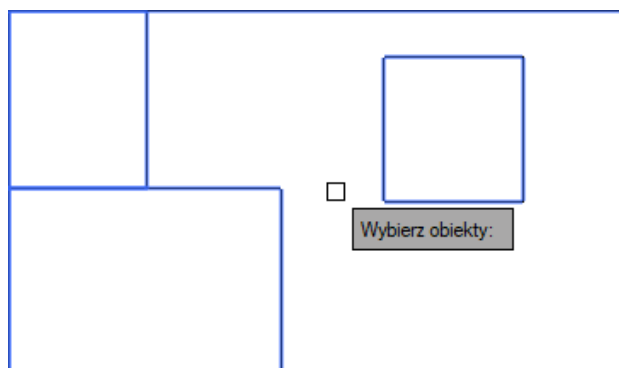
It's necessary to specify a desired place for your description block. The size of description and desktop properties can be found in the settings.

Mark area

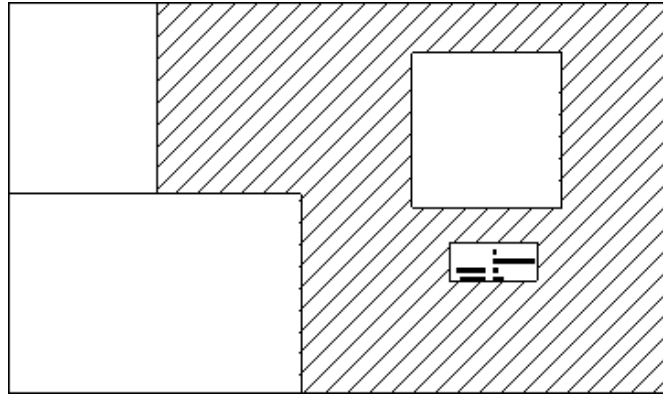
With this function you can mark an area by selecting a frame. After running the function, you need to click on the area you want to be labelled, and click Enter.



Now select areas you want to be excluded from the marking and confirm with Enter.



Lastly, choose a place to enter the description frame.



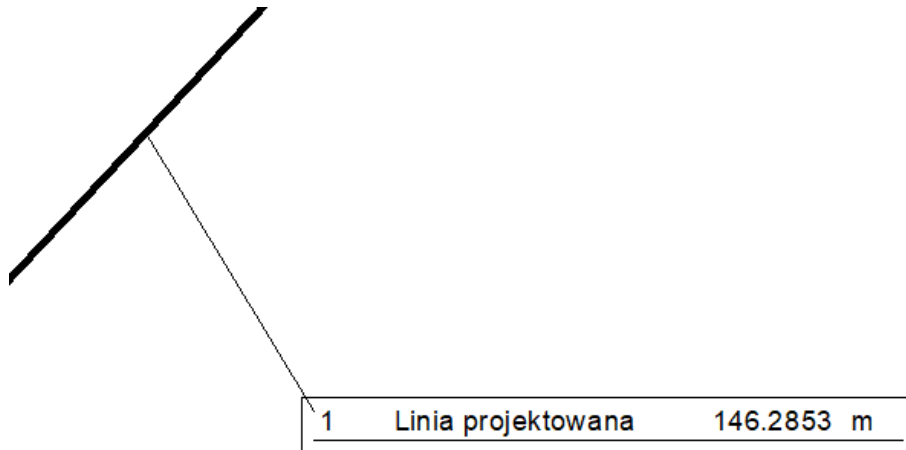
Line measurement

This function works analogically to the function Area Measurement with one difference. Only the lines will be calculated, not the whole area of a selected object. Once the function is activated, you need to define the name.

The screenshot shows the 'Length' dialog box with the following settings:

- filtr:** Empty text field with a 'Filter' button.
- Sort:** Buttons for 'A-Z', 'Z-A', '1-2', and '2-1'.
- Object List:** A list containing 'Linia projektowana' (highlighted), 'Taras', and 'Taras2'.
- New description:** A text field containing 'Linia projektowana', with 'Remove', 'Change', and 'Add' buttons below it.
- Autonumber:** A checked 'Turn on' checkbox and a 'Number' field set to '-1'.
- Lokalizacja:** A dropdown menu set to 'Budynek1'.
- ID:** A dropdown menu set to 'ID1'.
- Edit attributes:** A button.
- Expression:** A text field with the expression '@L - length, @A - area' below it.
- Options:** A checked 'Dodaj hatch' checkbox.
- Buttons:** 'OK' and 'Close' buttons at the bottom.

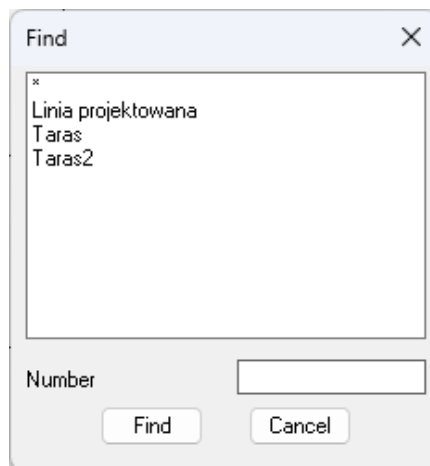
Now choose next objects as well as the insertion point of the description line. When you insert a descriptive line at the end is inserted description of the object taking into account its circuit. When you select the Line Measurement function, indicate linear objects. Their total length will be measured and inserted into the external reference with the name and sequence number.



Find/select

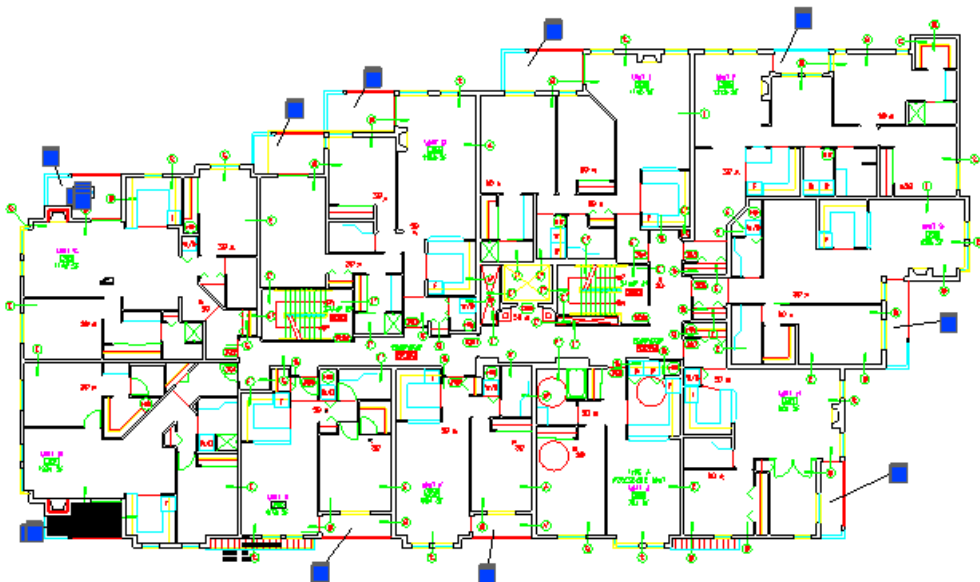
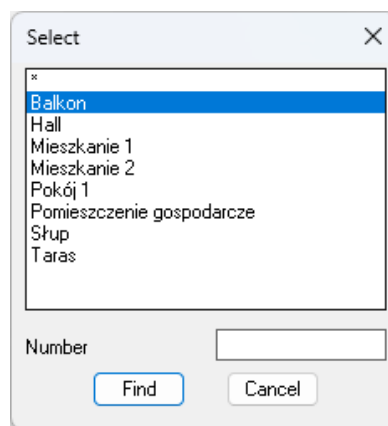
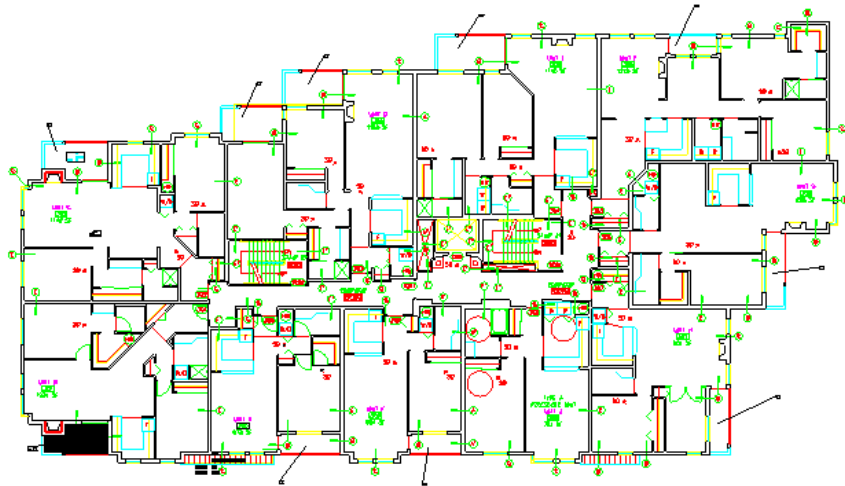
Find

This function finds all description blocks where description attribute has the same or similar value as selected description text. Then the view is centered to a description block. After pressing space, another element with the same description will be found.



Select

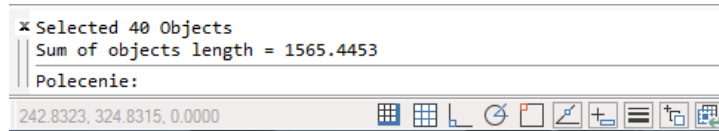
This function selects all description blocks where attribute description is the same as selected by the user. When you select an item and click Find, the program selects all items in the drawing area indicated by the user.



Tools

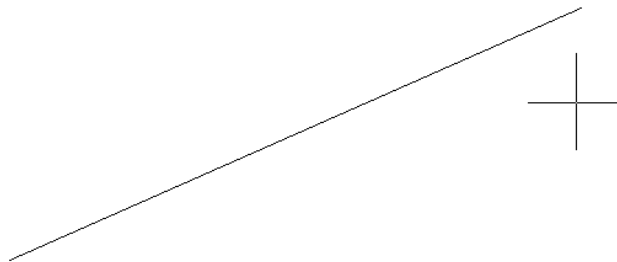
Sum of length

User selects objects, then application calculates sum length of all lines, polylines, arcs and circles.

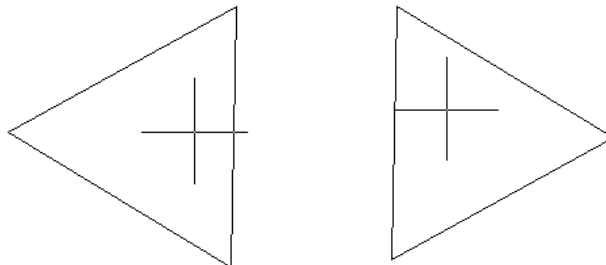


Draw a triangle by distance

This function lets you automatically draw triangles of specified sizes, as well as giving you the option to fit the object to an existing shape. Once the command has been activated, specify the starting point of the triangle and its direction. Now specify the distances of following sides. The size can be defined by entering a value in the command bar or by using the cursor.



Now specify distances of next sides. The size can be defined by entering a value in the command bar or by using the cursor.



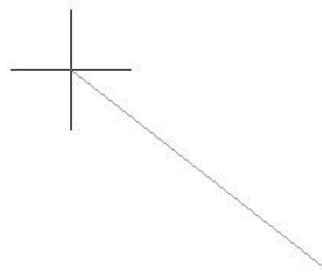
Once distances are entered choose a direction of the triangle.

MDist

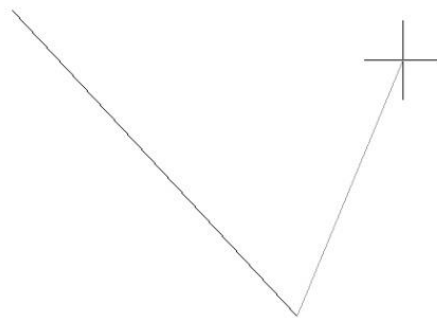
User pick points, then application calculates and display in command bar sum of all distances between picked points.

Draw a triangle by angle

This function is used to create a triangle with an angle and length of two sides of your choice. Once activated you will have to specify the top of the angle and the direction of the first side of the triangle.



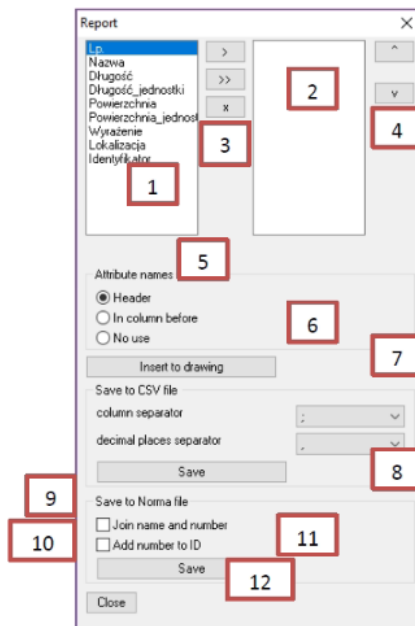
Now enter the length of the first side, an angle, and the length of the second side.



The angle needs to be entered in degrees or you can choose the function Measure from the toolbar. After typing in the shortcut Z, you need to determine the start and end of two lines in between which the angle will be measured. Once all data has been entered, the last side of the triangle will be added and by using the cursor you should choose the direction of the triangle.

Report

With this function, you can create a report of your measurements.

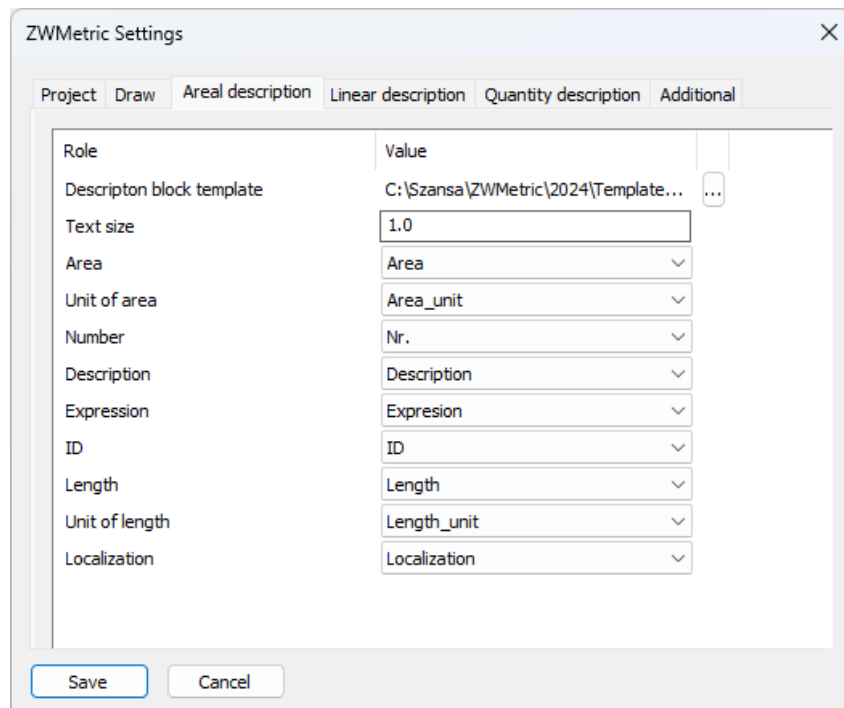


In the window shown above we can see:

1. List of all attributes defined in selected block.
2. List of all attributes names, which will be considered in created report.
3. A button which lets user to select attributes to report.
4. With this buttons, you can decide order of columns.
5. Options to define, where will be headers of columns in report.
6. After clicking this button, a report will be inserted into drawing.
7. Settings to save data to text file. It lets user to decide which mark will be columns and decimal places separators in saved file.
8. By this button you can save report data in external text file (with extension .csv).
9. Setting to define if safe to Norma file format will be with number and description join in the same column.
10. Setting to define if safe to Norma file format will be with number and ID join in the same column.
11. By this button a report will be saved in external text file with format corresponding with application Norma.
12. A button to close the report window.

Settings

This command lets you change the settings of ZWMetric.



Activate

A trial period that lasts for 30 days with full functionality is available after installation of the application.

Activation must be completed on an account with administrative privileges.

Once the trial period of 30 days runs out, a licence will be needed in order to use the program. After receiving the payment, an e-mail with an activation code will be sent. Activation is available directly in ZWCAD or by using the function Activation from menu of the application. It is also possible to activate the program from its installation folder. By default located in: **C:\Szansa\Aktywator\2024\EN** and run **Aktywator_2024.exe**.

In operating systems such as Windows Vista, Windows 7, Windows 8 and Windows 10 it is necessary to right click on ZWCAD icon and select Run as Administrator.

Full licence code is only visible on the licence certificate that is sent out during completion of the order due to security reasons. Once Activator has been launched, the following window will be displayed:

Application	Module	Version	Licence type	Licence state	Expiring	The code
ZWTraffic	All	2019	Full license	Active	2024-03-14	
ZWTraffic	Lite	2019	Full license	Active	2024-03-14	
ZWTraffic	All	2019	Full license	Expired	2024-03-14	
ZWTraffic	All	2019	Full license	Expired	2024-03-14	
ZWTraffic	All	2019	Full license	Expired	2024-03-14	
ZWTraffic	All	2019	Full license	Expired	2024-03-14	
ZWTraffic	All	2019	Full license	Expired	2024-03-14	
ZWTraffic	All	2019	Full license	Expired	2024-03-14	
ZWTraffic	All	2019	Full license	Expired	2024-03-14	
ZWTraffic	All	2019	Full license	Expired	2024-03-14	

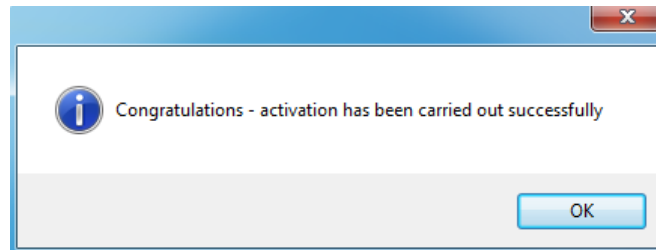
Please click on **Activate**.

A choice between activating the application online or offline will be present.

Online activation

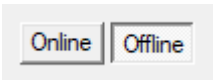
In the field **Activation code** please type in the information sent during realization of the order, afterwards click on **Activate**.

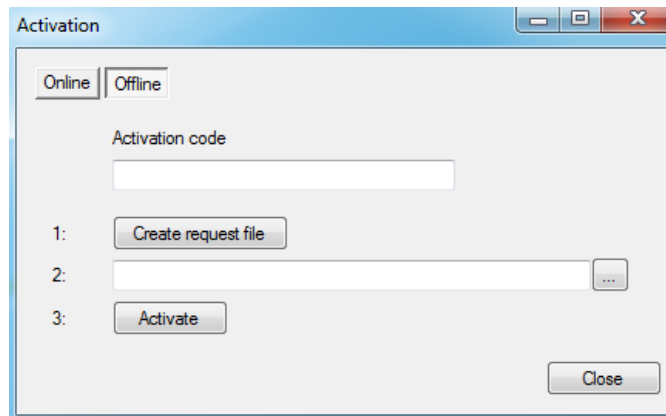
An information window will pop up confirming the activation.



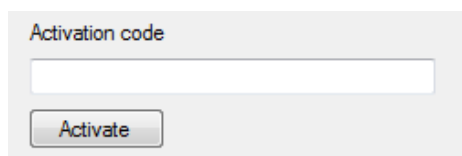
Once ZWCAD is launched, all functions of the program should be loaded and available.

Offline activation

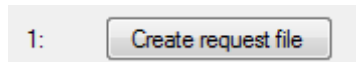
In the **Offline** tab  additional steps are required to complete the activation.



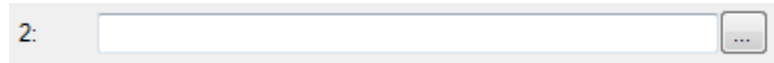
In the field **Activation code** please type in the information sent during realization of the order.



Afterwards it is necessary to click on Create a request file, it will create an additional file which needs to be saved on the desktop or in any other directory of the computer.



The file needs to be sent in a form of an attachment to, pomoc@zwcad.pl and a reply will consist of response file which then needs to be loaded in the activator:

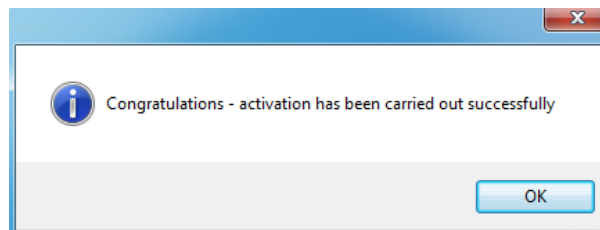


Response file needs to be saved on the computer and its localization needs to be determined by clicking on the following icon .

Once the response file is loaded, click on **Activate**.



An information window will pop up confirming the activation.



Once ZWCAD is launched, all functions of the program should be loaded and available.

Manual load

After installing the overlay, it should load automatically after running ZWCAD 2024. The functions should be available and the toolbar with the icons should be displayed. If after running ZWCAD the overlay does not appear, please follow these steps:

- Run the command `_menuload`.
- Press the button and select the file `ZWMetric.cuix` located in `C:\Szansa\ZWMetric\2024\EN`. Confirm the file by clicking Add.

